



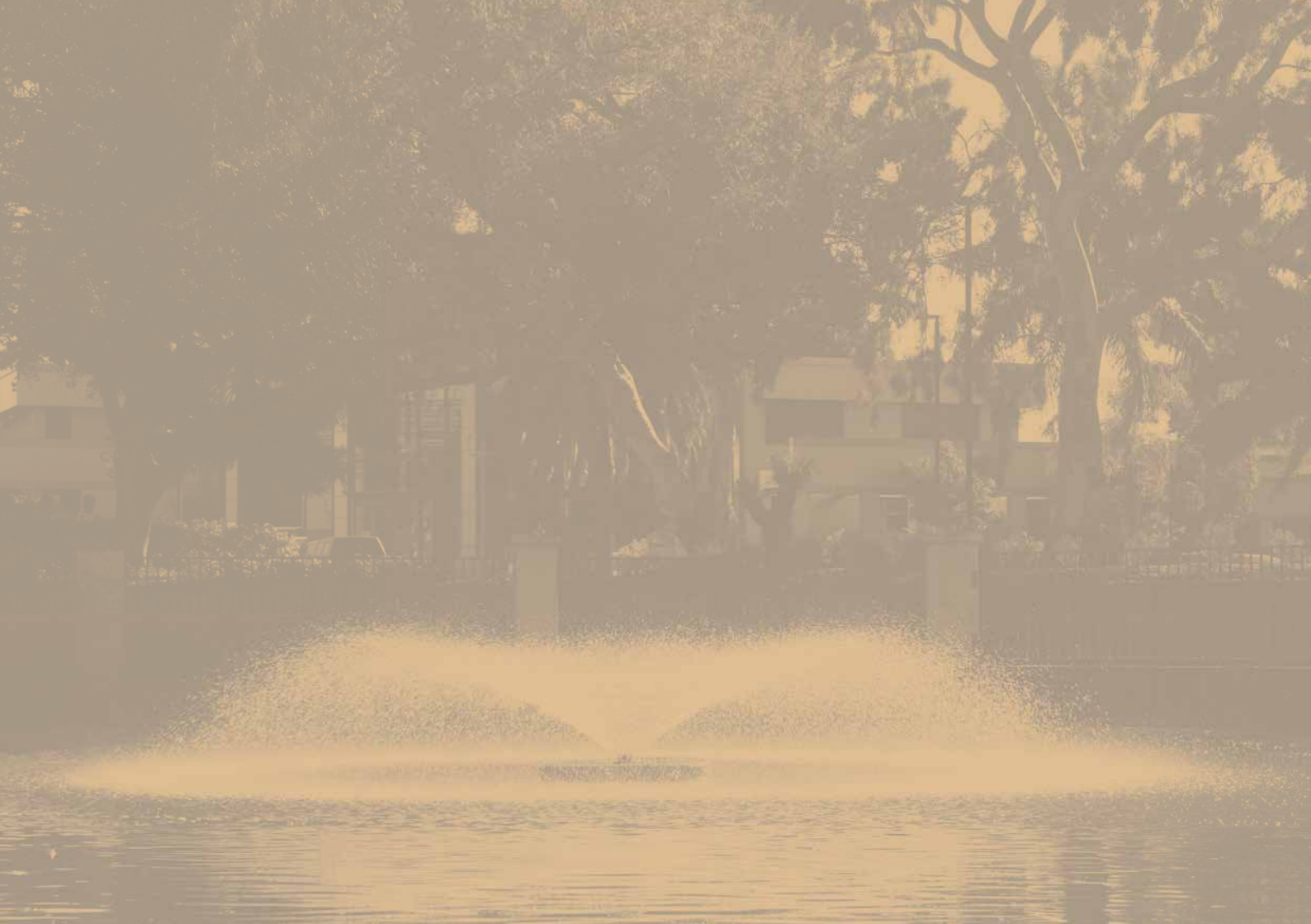
WRIGHT ST  
APARTMENTS

WRIGHT ST

APARTMENTS

WRI

APA





Perth CBD. 10km

Central Tafe Northbridge. 9km

Crown Entertainment Complex  
and Stadium. 5km

Swan River. 1.5km

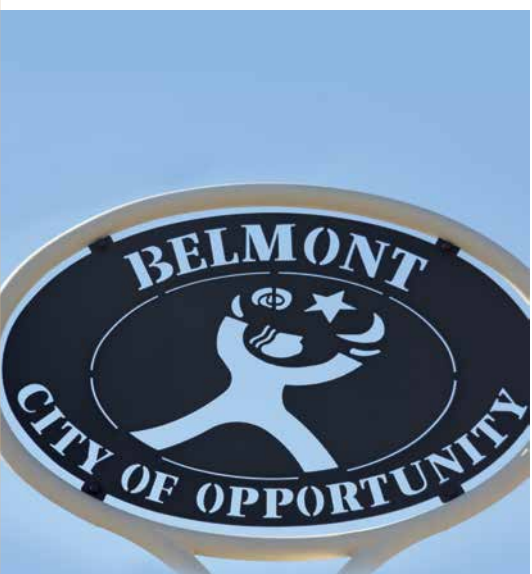
Belmont Race Course.  
5km

Curtin University. 9km

East Victoria Park. 3km

## Close to everything.

Wright Street Apartments are located on Wright Street, Kewdale in the City of Belmont. This established suburb is in a spectacular location, with the Crown Entertainment Complex, new Perth stadium, Swan River, Belmont Race Course and East Victoria Park cafe' strip just a stone throw away. The Perth CBD, Curtin University, Central TAFE and Northbridge's night life district are all located conveniently within 10km. With public transport just on your doorstep you are truly close to everything.







## Shops and amenities all within walking distance.

All major supermarkets and a wide selection of speciality shops, eateries and cafés are just across the road at the Belmont Forum. Adjacent to the Forum you can grab a bite to eat from one of the excellent restaurants, or just treat yourself to a movie at the 10 screen Reading Cinemas complex. For the more active types there are a couple of fitness centres to pump weights or do some cardio.



If you prefer doing a few laps or just splashing in the water, head over to the Belmont Oasis Leisure Centre. With an Olympic size indoor pool, two 25 metre pools, a children's lagoon pool, a gym, group fitness classes and a café, it has something for everyone.

Playgrounds, BBQs, lakes and green areas ideal for picnics, walks or just passing the time away are just down the road at beautiful Faulkner Park and Tomato Lake Reserve.

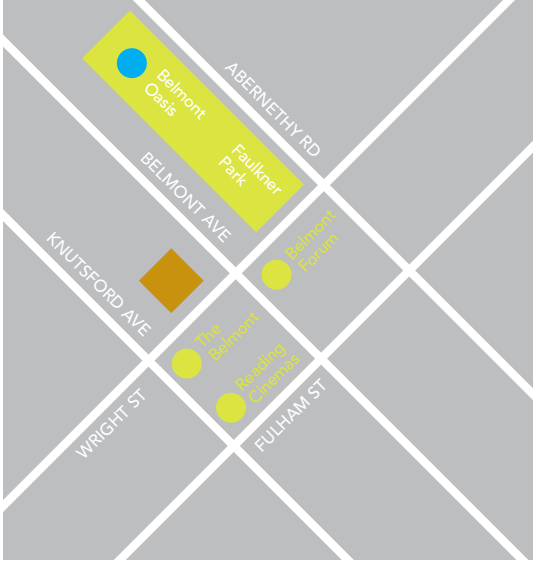


The City of Belmont is very community focussed. It boasts a youth centre, the Robert Faulkner Library, an arts and craft centre, day care centres, kindergartens, primary and secondary schools as well as a variety of sports clubs all ready for you to use and enjoy.



### Fantastic services and facilities on your doorstep.

- Belmont Forum
- Reading Cinema
- A variety of restaurants
- Belmont Oasis Leisure Centre with swimming pools
- Fitness centres
- Ruth Faulkner Public Library
- Belmont Museum
- Child Health Clinic
- Child care centres
- Government and private schools for all ages
- Public transport
- The Belmont Bar & Bistro
- Skate Park
- The Base Youth Centre
- Faulkner Park
- Tomato Lake Reserve
- Adachi Park



- Swan River foreshore
- Easy Victoria Park cafe strip
- Sporting clubs and fields
- Curtin University (9km)
- Central TAFE (9km)
- Belmont and Ascot Race Course
- Crown Entertainment Complex
- The new Perth Stadium





# Modern look, intelligent design.

Wright Street Apartments has been designed as a modern development with an appealing and welcoming street front to suit the established area.

As an extra benefit and with a view to environmental sustainability, the complex was designed to use solar power in all of its public areas.

# Bright spaces, open living.

Inside the building, the architecturally designed apartments offer exceptional value for money with a selection of floor plans. All apartments have balconies while further outdoor entertaining in the podium gardens on the top floor are for the use and enjoyment of all residents.



Every apartment has been designed to make the most of the available natural light. Many of the back-facing apartments will enjoy city views. Inside, each floor plan is a combination of well-designed functional living spaces and open-plan areas. The apartments feature sleek, modern finishes with high-quality stainless steel kitchen appliances. The complex also offers secure parking and intercom access to all apartments.





# An excellent opportunity.

Living at Wright St. Apartments gives you the opportunity to enjoy a fantastic lifestyle at an affordable price. These apartments are ideal for first-home buyers, people looking to downsize, or as an investment in your future.

Take a look at the floor plans on the following pages to find the right apartment to suit your needs, then contact us today to register your interest.

APT  
MENTS



ST

WRIGHT

APART



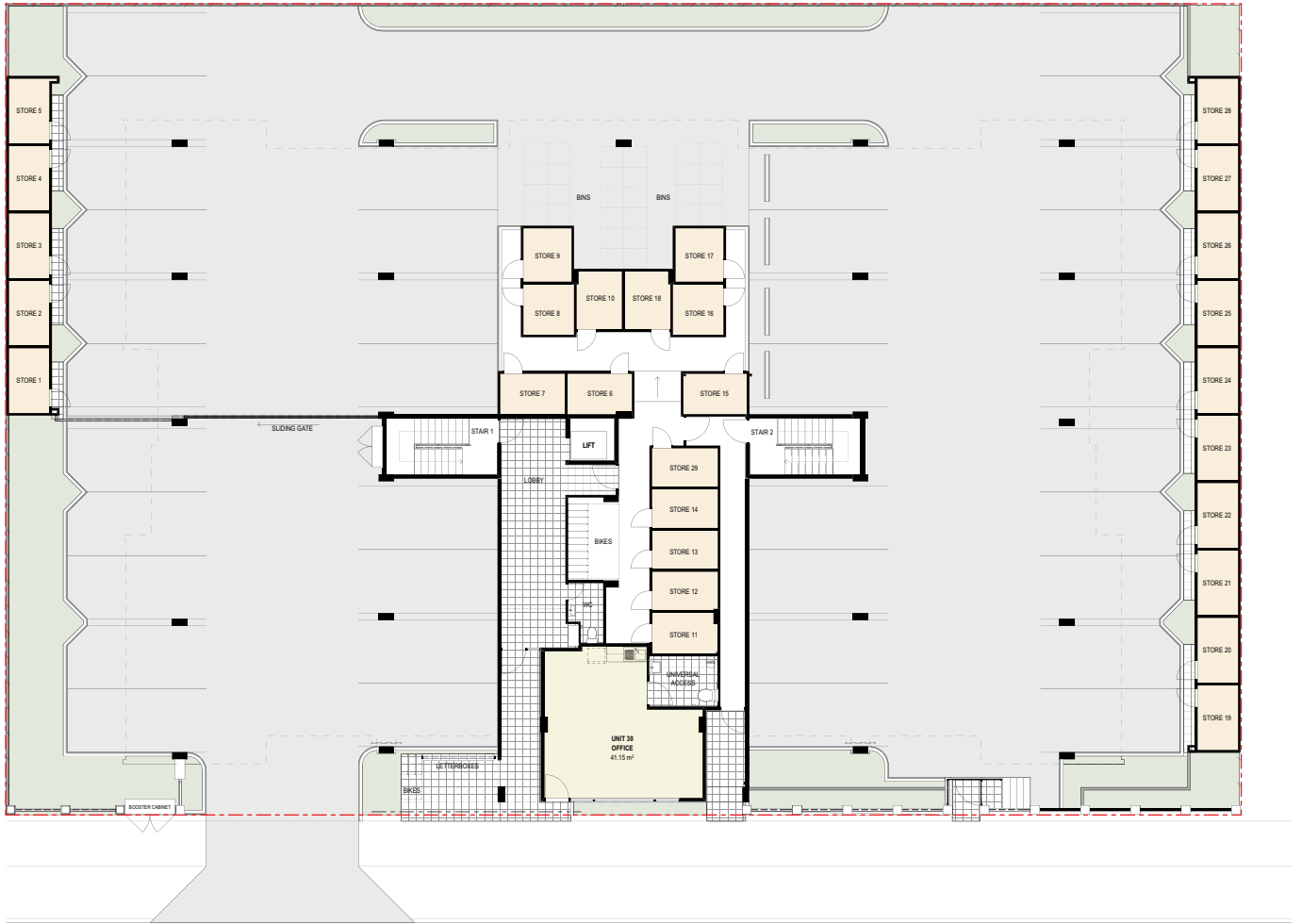
# WRIGHT

## APARTMENTS



# SITE PLAN

## GROUND FLOOR



WRIGHT STREET

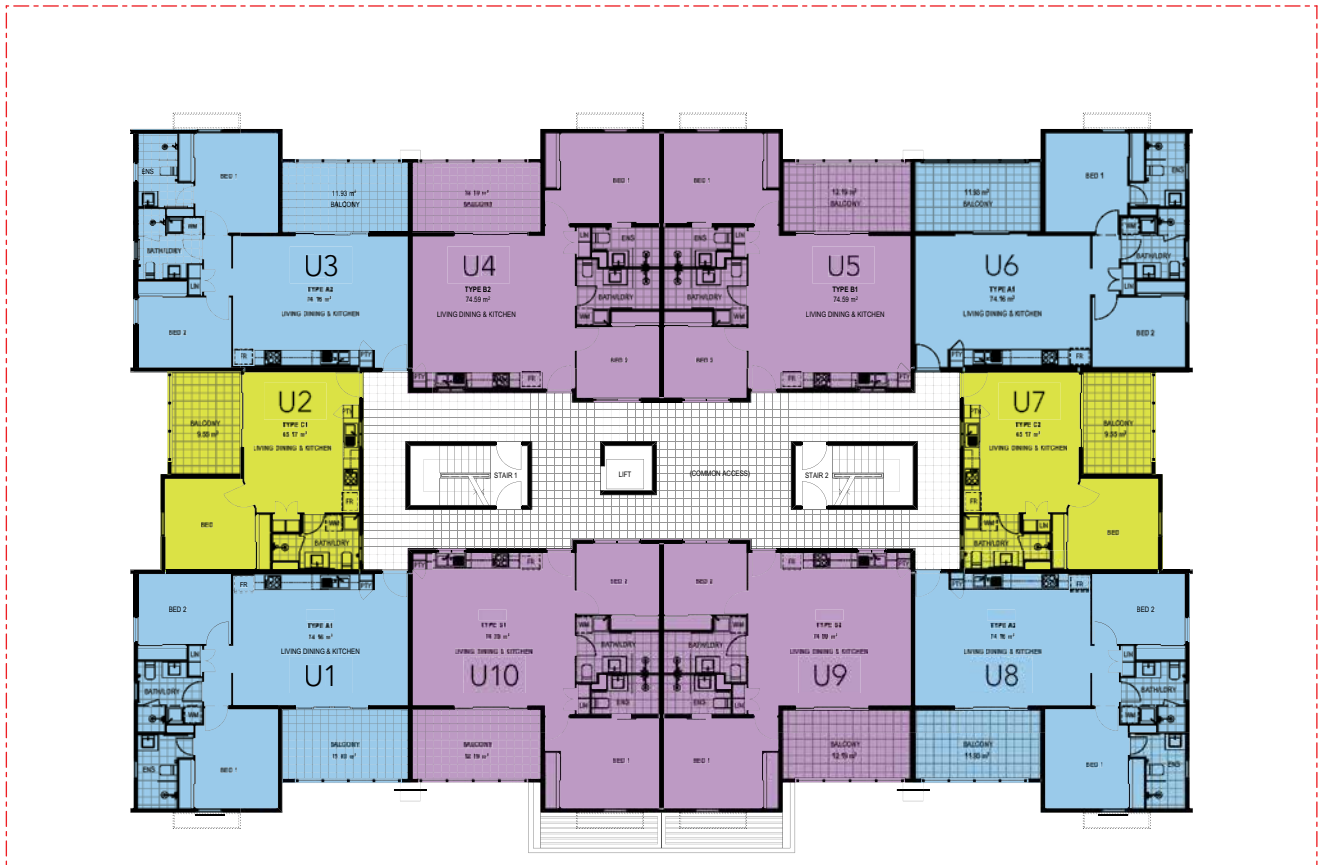


**WRIGHT ST**  
APARTMENTS



# SITE PLAN

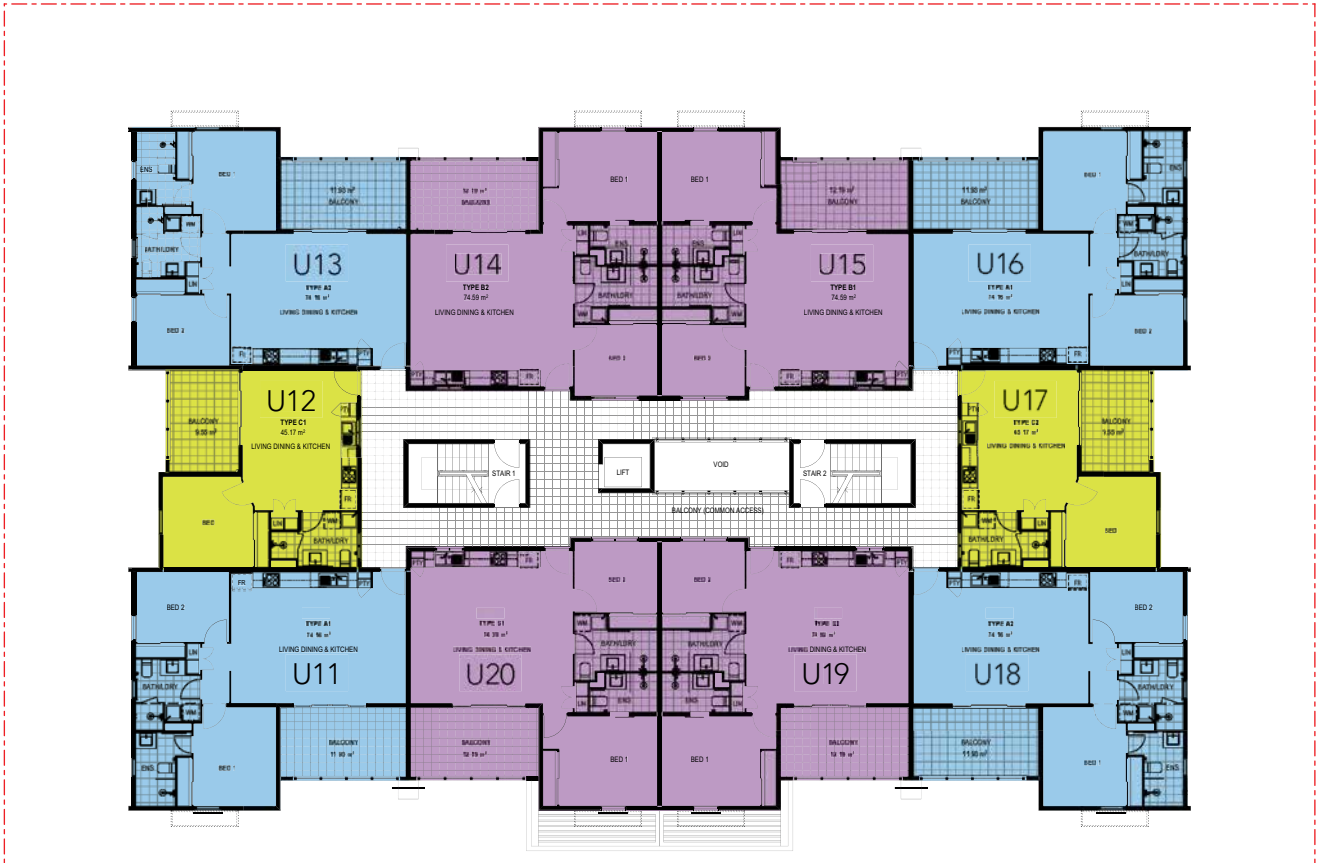
## FIRST FLOOR



**WRIGHT ST**  
APARTMENTS

# SITE PLAN

## SECOND FLOOR





# SITE PLAN

## THIRD FLOOR



## APARTMENT TYPE



# A1

apartment no. 1, 3, 6, 8, 11,  
13, 16, 18, 21, 23, 26, 28

unit area 74.16 sq.m

balcony area 11.93 sq.m

bedrooms 2

bathrooms 2

first, second and third floor

**nb:** Apartment type A2  
is the exact mirrored  
configuration of Apartment  
type A1.



WRIGHT ST  
APARTMENTS



## APARTMENT TYPE

# B1



apartment no. **4, 5, 9, 10,  
14, 15, 19, 20**

unit area **74.59 sq.m**

balcony area **12.19 sq.m**

bedrooms **2**

bathrooms **2**

first and second floor

**nb:** Apartment type B2  
is the exact mirrored  
configuration of Apartment  
type B1.



**WRIGHT ST**  
APARTMENTS

## APARTMENT TYPE



# C1

apartment no. **2, 7, 12, 17, 22, 27**

unit area **45.17 sq.m**

balcony area **9.55 sq.m**

bedrooms **1**

bathrooms **1**

first, second and third floor

**nb:** *Apartment type C2 is the exact mirrored configuration of Apartment type C1.*



**WRIGHT ST**  
APARTMENTS

## APARTMENT TYPE



# D1

apartment no. **24, 25**

unit area **67.46 sq.m**

balcony area **12.19 sq.m**

bedrooms **2**

bathrooms **1**

third floor

***nb:** Apartment type D2 is the exact mirrored configuration of Apartment type D1.*



**WRIGHT ST**  
APARTMENTS



## APARTMENT TYPE



# E1

apartment no. 29

unit area **46.08 sq.m**

balcony area **22.09 sq.m**

bedrooms 1

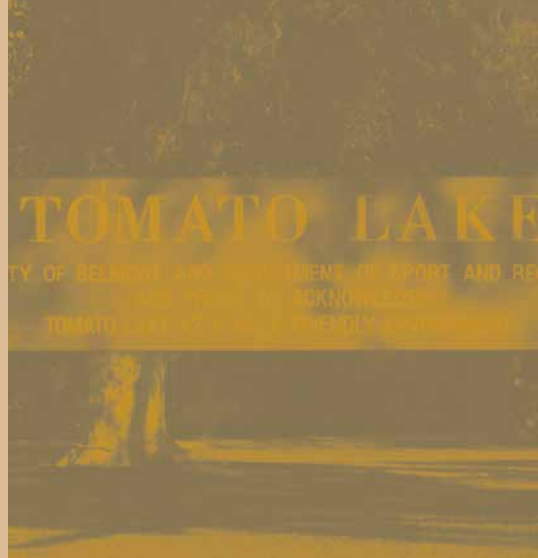
bathrooms 1

third floor

*nb: Apartment type E2 is the exact mirrored configuration of Apartment type E1.*



**WRIGHT ST**  
APARTMENTS



WRIGHT

APARTMENTS

[wrightstapartments.com.au](http://wrightstapartments.com.au)



WRIGHT ST  
APARTMENTS

ANOTHER PROJECT BY

 FINI DEVELOPMENTS