

apartment plans  
and specifications



WRIGHT ST  
APARTMENTS

WRIGHT ST

APARTMENTS

WRI

APA

## APARTMENT TYPE



# A1

apartment no. 1, 3, 6, 8, 11,  
13, 16, 18, 21, 23, 26, 28

unit area **74.16 sq.m**

balcony area **11.93 sq.m**

bedrooms **2**

bathrooms **2**

first, second and third floor

*nb: Apartment type A2  
is the exact mirrored  
configuration of Apartment  
type A1.*



**WRIGHT ST**  
APARTMENTS

## APARTMENT TYPE



# B1

apartment no. **4, 5, 9, 10,**  
**14, 15, 19, 20**

unit area **74.59 sq.m**

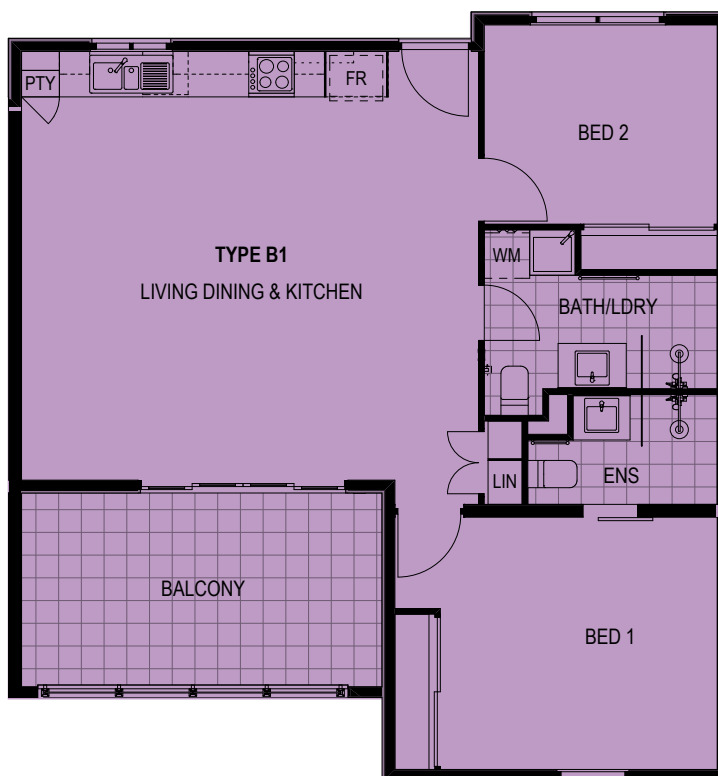
balcony area **12.19 sq.m**

bedrooms **2**

bathrooms **2**

first and second floor

*nb: Apartment type B2  
is the exact mirrored  
configuration of Apartment  
type B1.*



**WRIGHT ST**  
APARTMENTS

## APARTMENT TYPE



# C1

apartment no. 2, 7, 12, 17,  
22, 27

unit area 45.17 sq.m

balcony area 9.55 sq.m

bedrooms 1

bathrooms 1

first, second and third floor

*nb: Apartment type C2  
is the exact mirrored  
configuration of Apartment  
type C1.*



WRIGHT ST  
APARTMENTS

## APARTMENT TYPE



# D1

apartment no. **24, 25**  
unit area **67.46 sq.m**  
balcony area **12.19 sq.m**  
bedrooms **2**  
bathrooms **1**  
third floor

*nb: Apartment type D2 is the exact mirrored configuration of Apartment type D1.*



**WRIGHT ST**  
APARTMENTS

## APARTMENT TYPE



# E1

apartment no. **29**

unit area **46.08 sq.m**

balcony area **22.09 sq.m**

bedrooms **1**

bathrooms **1**

third floor

*nb: Apartment type E2 is the exact mirrored configuration of Apartment type E1.*



**WRIGHT ST**  
APARTMENTS

# apartment specifications

## APARTMENT INTERIORS – ALL

### KITCHEN

#### **Benchtop**

Engineered stone top to selected surfaces with 30/40mm square edge

#### **Cabinets**

Laminate finish to base and overhead units

#### **Cupboard doors**

Laminate finish to base and overhead units

#### **Pantry**

Laminate finish as per plans with shelves

#### **Overhead cupboards**

Laminate finish facing

#### **Drawers**

Cutlery, utility and pot drawers with soft closers

#### **Cooktop**

Elba by Fisher and Paykel Electric Ceran 600mm cooktop

#### **Oven**

Elba by Fisher and Paykel Electric stainless steel 600mm multi-function oven

#### **Rangehood**

Elba by Fisher and Paykel stainless steel 600mm slideout above hob

#### **Dishwasher**

Elba by Fisher and Paykel stainless steel

#### **Splashbacks**

Ceramic tiles

#### **Sinks**

Stainless steel

### BATHROOM / ENSUITE / LAUNDRY

#### **Vanity**

Timberline Carlo Vanity with ceramic top and basin or similar

#### **Mirrors**

Frameless above vanities

#### **Shower screens**

Semi-frameless clear safety glass to code

#### **Shower tapware**

Chrome mixer tap with shower on rail

#### **Laundry**

Stainless steel inset sink

#### **Toilets**

White vitreous china close coupled suite

#### **Tapware**

Flickmixers throughout

#### **Accessories**

Brushed stainless steel toilet roll holder and towel rails

#### **Wall tiles**

2000mm above floor level to shower 1200mm to all other walls

### GENERAL

#### **Hot-water system**

Electric Storage

#### **Bedroom robes**

Vinyl sliding doors

Shelf and rail at 1800 above floor level

#### **Linen cupboards**

Part broom cupboard with laminate shelving

#### **Dryer**

Included

#### **Floor finishes**

Quality carpet to bedrooms

Polyflor Vinyl or similar approved product to hallways, entries, kitchen / living areas

Ceramic/porcelain tile to bathrooms & laundries

### ELECTRICAL SERVICES

#### **Exhaust fans**

Ducted from bathrooms and ensuites

#### **Telephone points**

Provided to living room

#### **Television points**

Provided to living and master Bedroom

#### **Cable TV Access**

Provided to Living

#### **Air conditioning**

Split system to living area. Ceiling fans to bedrooms

#### **Power**

All double GPO outlets with RCD protection

LED lighting where possible throughout

#### **Security**

Voice intercom and remote entry door release

#### **Smoke Alarms**

Hard-wired smoke detectors

## INTERNAL CONSTRUCTION ALL APARTMENTS

### PARTY WALLS

Concrete with paint finish

### INTERNAL WALLS

Light-weight framing

### WET-AREA WALLS

Light weight framing/concrete

### SKIRTINGS

Painted 90mm MDF

### CEILINGS & BULKHEADS

Generally 2400mm high painted flush plasterboard

### CORNICES

70mm coved

### FRONT DOORS

Painted solid core with security lock and turn-snob

### INTERNAL DOORS

Painted flush panel

### CAR-PARKING

Allocated undercover bay

## EXTERNAL CONSTRUCTION ALL APARTMENTS

### EXTERNAL WALLS

Texture coated to masonry walls

Light weight cladding

### WINDOWS & SLIDING PATIO DOORS

Clear aluminium windows and sliding doors where applicable  
Flyscreens to all operable windows and sliding doors

### FOOTINGS & FLOOR SLABS

Insitu reinforced concrete

### ROOFS

Zincalume metal-deck roofing with anti-con insulation

### BALCONY BALUSTRADING

Powder-coated aluminium

### WALKWAY BALUSTRADING

Powder-coated aluminium

### BALCONY FLOOR FINISH

Slip-resistant tiles

### STAIRWELL FLOOR FINISH

Textured granolithic concrete

### LETTERBOXES

Numbered and locking

### EXTERNAL LIGHTING

LED light fittings

### GATES

Framed powder-coated metal Automatic

### SOLAR PANELS

Installed to assist in the covering of Strata company expenses – especially common area lighting and lift power consumption

ANOTHER PROJECT BY



FINI DEVELOPMENTS

**nb:** Whilst all reasonable care has been taken in preparation of this brochure, the information contained herein is believed, but not guaranteed, to be correct. Prospective purchasers must rely on their own enquiries. This brochure does not constitute an offer or contract. Photographs, illustrations and artist impressions/perspectives of buildings are indicative only and are subject to change without notice.

WRIGHT

APART

[wrightstapartments.com.au](http://wrightstapartments.com.au)



WRIGHT ST  
APARTMENTS